



# COMUNITAT ENERGÈTICA AL PORT DE BARCELONA

 Héctor Lorient

 +34 608 299 177

 hector.lorient@cefiner.com

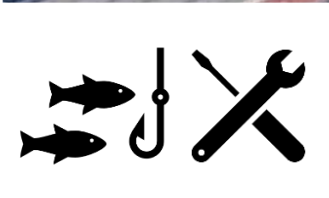
 6/11/2020








2022

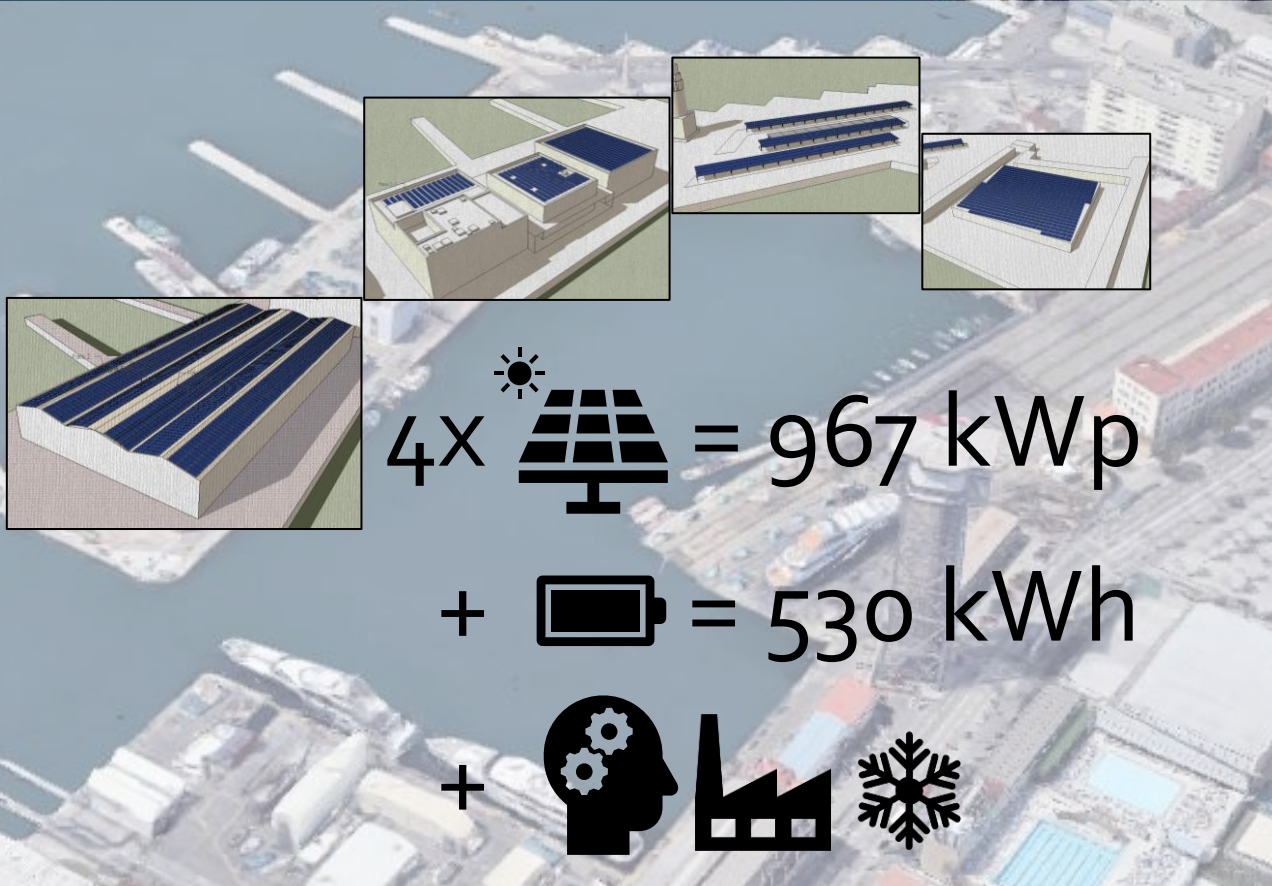







Ref Cadastral 2204301DF3820C0001YQ

 x6 = 682MWh



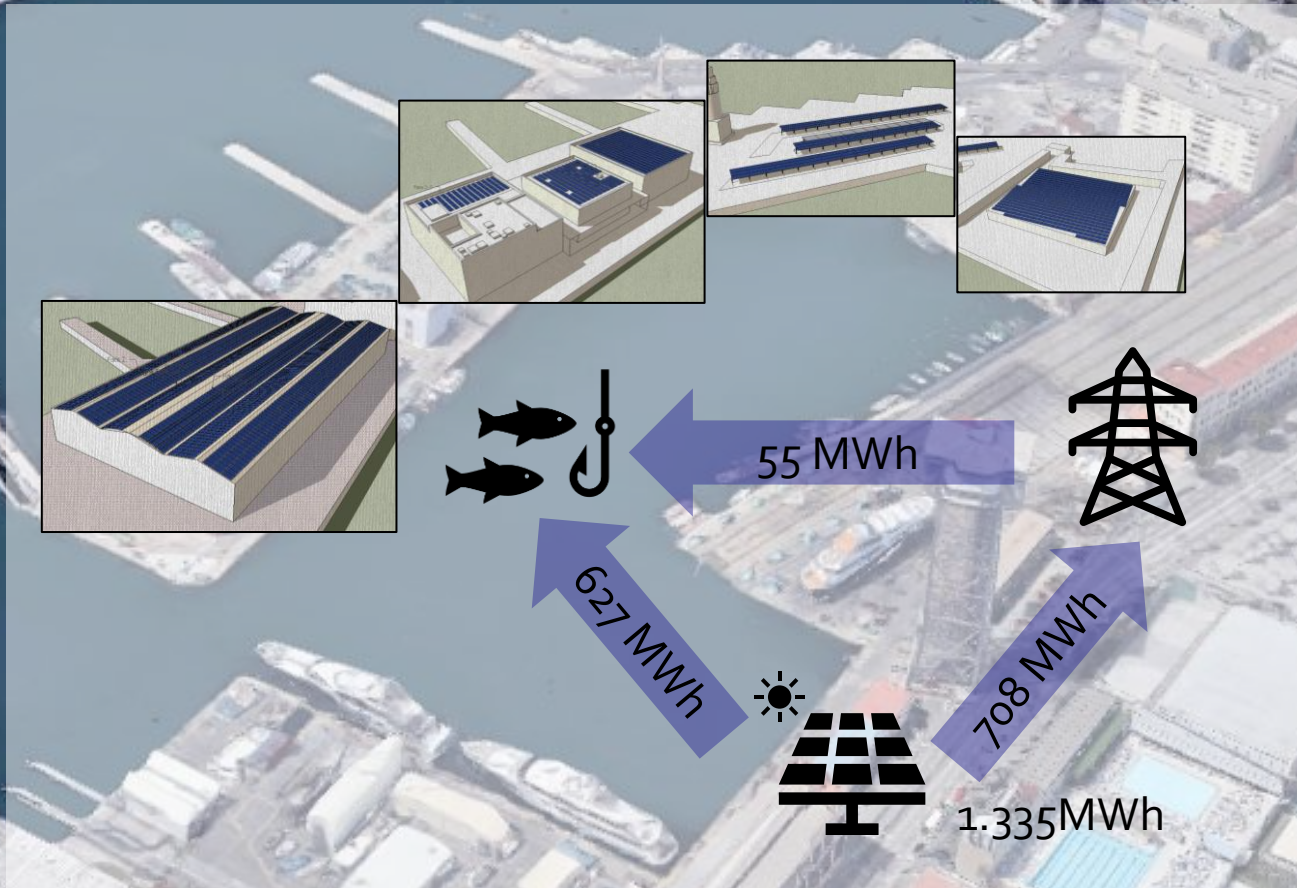
1<sup>a</sup> versió (10/2019)



4x  = 967 kWp  
+  = 530 kWh  
+   

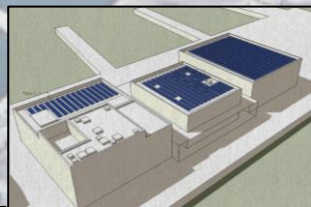
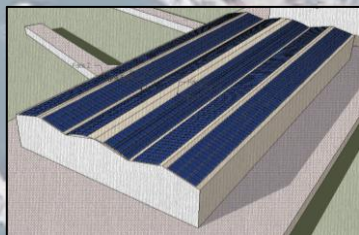


1<sup>a</sup> versió (10/2019)





1<sup>a</sup> versió (10/2019)



-92%



-212% (node energia positiva)



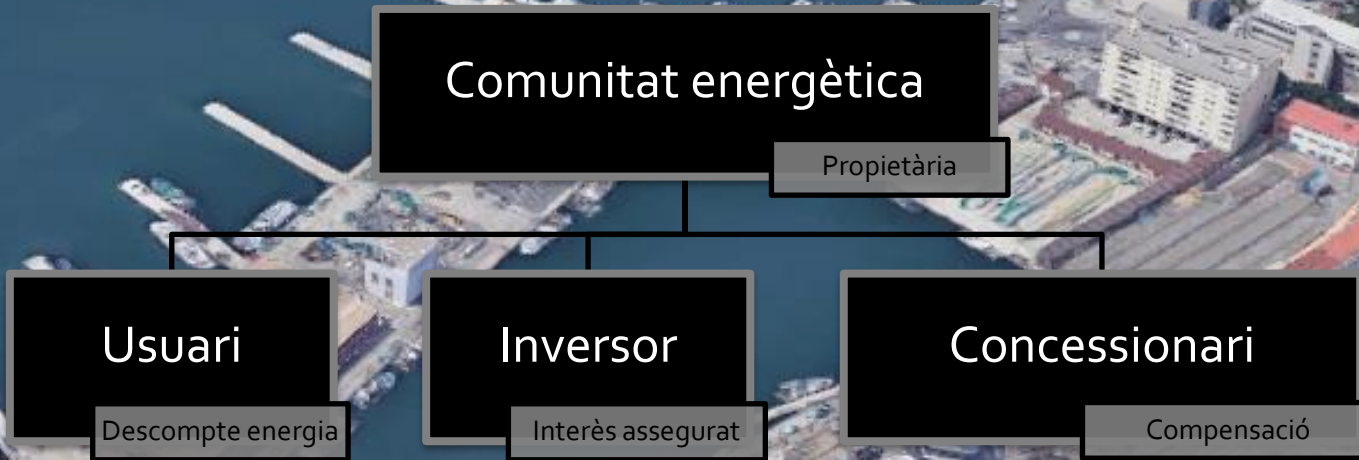
1.220.000€



106.000€/any




1<sup>a</sup> versió (10/2019)

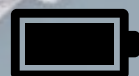




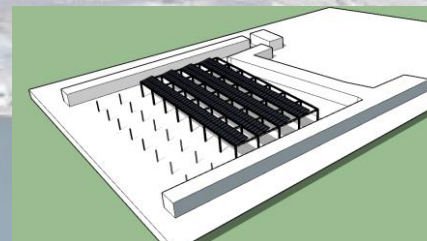
# Versió actual (11/2020)





 = 118,5 kWp

 = 70 kWh

 2022



 = 108,8 kWp

 2021

